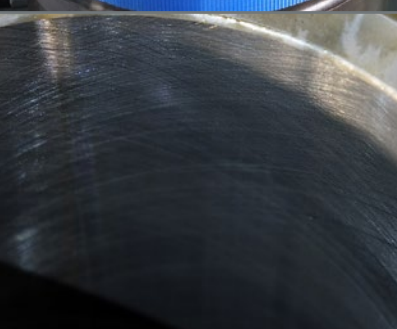
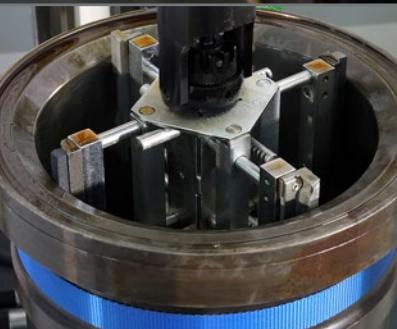
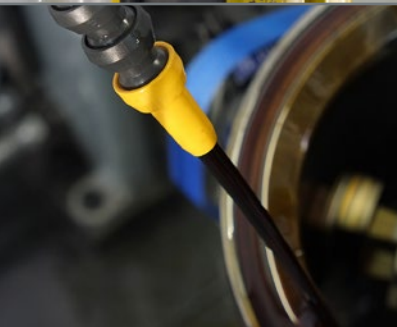
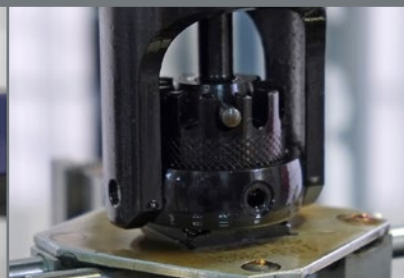
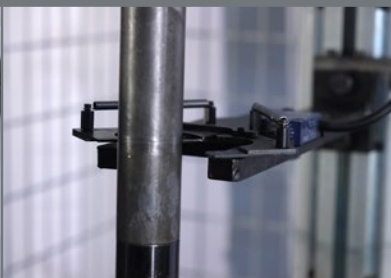


# **BVD 450I** HONING MACHINE

**Honingtec**





The BVD 450 I has a std. honing length of **2.000 mm.** and diameter range of **63 - 450 mm.** This honing machine is specially designed to hone cylinder liners for large marine engines, but also hydraulic cylinders and other honing jobs within its range are possible.

The complete honing process is **PLC controlled**, this means after setting all parameters like Rpm, strokespeed, stone pressure and honingtime, it is very easy to repeat this cycle in **"Auto Mode"** and have the same results after each honing cycle.

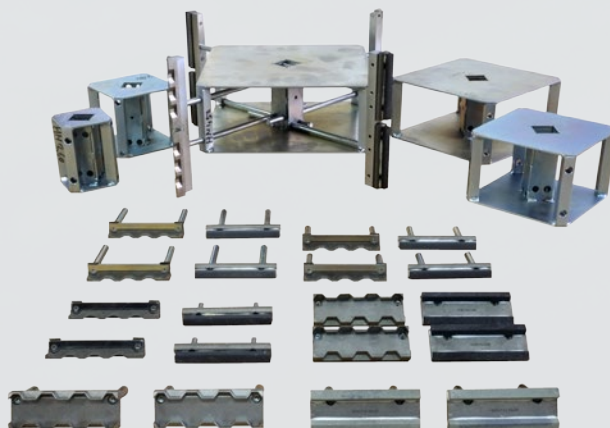
This automatic cycle combined with constant-stonepressure system, will bring down your honing time to the level of fast service and money making. Also during the honing cycle the operator can prepare, measure and inspect the next liner, his attention is not needed for the honing process.

#### Machine Features:

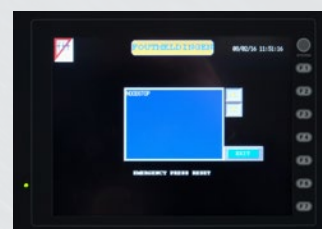
- PLC control with Touch-Screen
- all settings like Rpm, strokespeed and stone pressure can be changed during honing
- easy setting up and clamping for cylinder liners and hydraulic cylinders
- universal T-slot table ( option)
- pneumatic fast lock & release for honing bar
- safety catch for honing bar, will shut down machine
- blind hole stop/delay program
- build conform CE safety regulations

#### Accessories

Range (mm)	Simple extension	Double extension	Reinf. support	Stone
63,50 - 68,58	-	-	-	G63
68,58 - 107,95	-	-	-	M68
89 - 138	-	-	-	N94
104 - 162	HN-345	-	-	W104
120,65 - 177,8	HN-355	HN-855	-	W104
165,1 - 228,6	HN-365	HN-865	HN-260	W104
222,3 - 304,8	HN-375	HN-875	HN-280	W104
279,4 - 381	HN-385	HN-885	HN-290	W104
355,6 - 457,2	HN-395	HN-895	HN-340	W104
432 - 533	HN-415	HN-915	HN-450	W104







Big touchscreen display for easy control

Surfacetable with T-slots 800 x 500 mm



# TECHNICAL SPECIFICATIONS

## TECHNICAL DETAILS

Maximum stroke	2.000 mm
Diameter range	63 - 450 mm
Maximum diameter outside cylinder	700 mm *
Axial speed	4 - 22 m/min.
Rotation speed	14 - 84 r.p.m.
Optional diameter range	38 - 320 mm *
Optional rotation speed	30 - 180 r.p.m. *
Stroke hydraulic power	2,2 Kw
Rotation power	1,1 Kw
Control voltage	24 V DC
Voltage	400 V / 3~PH / 50 Hz
Total power	5 Kw
Honing oil pump	0,18 Kw
Honing oil capacity	200 L
Minimum pneumatic pressure	6 Kg/m <sup>2</sup>

## DIMENSIONS

Dimensions to work	2.000 × 2.000 × 4.900 mm
Packaging dimensions	2.500 × 1.300 × 1.200 mm
Net weight (without oil)	820 Kg

G63, M68, N94, and W104  
Go directly inserted into  
the central square.  
(Without extensions and  
reinforcement support)

